



Office of the Monroe County Surveyor
Trohn Enright-Randolph

Health Services Building
119 West 7th Street
Bloomington, IN 47404
Phone: (812) 349-2570

Dear User,

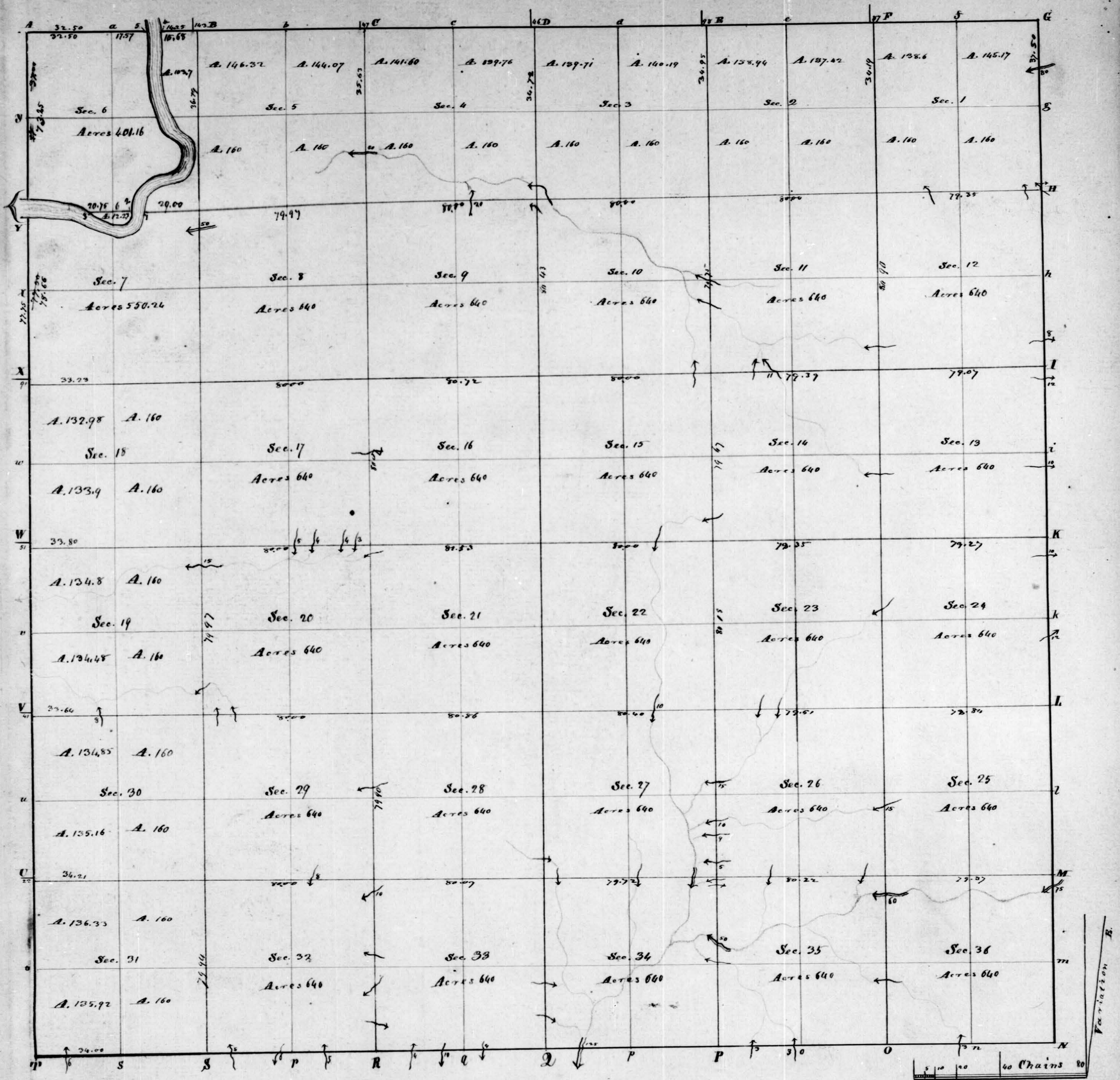
The following images were obtained in 2017 by the Office of the Monroe County Surveyor from the State Imaging and Microfilm Laboratory at the Indiana State Archives. The field notes and plats for Greene County are stored on microfilm Reel 4660 at the Indiana State Archives. Each page provided by the State Imaging and Microfilm Laboratory is approximately 18MB. Our office combined the pages by Township & Range and reduced the resulting pdfs. This process may have caused some degradation in quality. We will provide unreduced images of specific pages if required. Please contact us at 812-349-2570 or at SurveyorsOffice@co.monroe.in.us to request a higher quality image of any specific page.

The pdfs are bookmarked with the original page numbers as assigned by the State Imaging and Microfilm Laboratory.

Be prepared to provide the county name, reel number, and the required page numbers when requesting full sized images.

If you would like a DVD of an entire county, please provide us with one DVD per county along with a self-addressed, stamped envelope.

Trohn Enright-Randolph
Monroe County Surveyor



Township No. VIII North, Range No. IV West 2nd M.

Surveyed by William Harris 1816

Description of the Soil on the interior Sectional Lines.

Section	Quality &c.	Section	Quality &c.	Section	Quality &c.
35, 36	Land hilly & rate, Sugar, Oak, Beech, Poplar, Middleling farming land	2, 3	Hilly, Oak, Beech, Poplar, Ash, Middleling farming land	4, 9	Timber, Oak, Sugar, Oak, Poplar, good farming land
25, 36	Land hilly, rich soil, Sugar, Oak, Beech, Poplar, Middleling farming land	33, 34	Land hilly, Walnut, Poplar, Ash, Same	4, 5	Land hilly, rich soil, good farming land, Oak, Sugar, Beech, Poplar
23, 20	Land same rich & rate soil	27, 34	Same	31, 32	Land hilly, rich soil, good farming land, Oak, Sugar, Beech, Poplar
21, 25	Same	29, 33	Land ridges, Oak, Sugar, Poplar, Ash, very good farming land	29, 32	Land hilly, rich soil, good farming land, Oak, Sugar, Beech, Poplar
23, 24	Land hilly, Oak, Sugar, Poplar, Middleling farming land	22, 27	Same	20, 30	Land hilly, rich soil, good farming land, Oak, Sugar, Beech, Poplar
13, 24	Land same, Oak, Beech, Gum, Poplar	21, 22	Same	20, 29	Land hilly, rich soil, good farming land, Oak, Sugar, Beech, Poplar
13, 14	Land hilly, Oak, Sugar, Poplar, Middleling farming land	15, 22	Same	19, 20	Land hilly, rich soil, good farming land, Oak, Sugar, Beech, Poplar
12, 13	Land hilly, Oak, Sugar, Poplar, Middleling farming land	15, 16	Land hilly, Oak, Sugar, Poplar, Middleling farming land	17, 20	Land hilly, rich soil, good farming land, Oak, Sugar, Beech, Poplar
11, 12	Land hilly, Oak, Sugar, Poplar, Middleling farming land	10, 15	Land hilly, Oak, Sugar, Poplar, Middleling farming land	14, 18	Land hilly, rich soil, good farming land, Oak, Sugar, Beech, Poplar
1, 12	Same	9, 10	Same	8, 17	Land hilly, rich soil, good farming land, Oak, Sugar, Beech, Poplar
1, 2	Land hilly, Sugar, Oak, Poplar, Middleling farming land	3, 10	Hilly, Oak, Sugar, Poplar, Middleling farming land	7, 8	Land hilly, rich soil, good farming land, Oak, Sugar, Beech, Poplar
34, 35	Same, Oak, Beech, Sugar, Poplar, Middleling farming land	3, 4	Oak, Ash, Hickory, Poplar, Middleling farming land, Oak & Beech	5, 8	Land hilly, rich soil, good farming land, Oak, Sugar, Beech, Poplar
26, 35	Same, Oak, Sugar, Oak, Beech, Poplar, Middleling farming land	32, 33	Hilly land, Oak, Sugar, Oak, Beech, Poplar, Middleling farming land	5, 6	Land hilly, rich soil, good farming land, Oak, Sugar, Beech, Poplar
26, 27	Land hilly, Oak, Sugar, Oak, Beech, Poplar, Middleling farming land	28, 33	Land hilly, rich soil, good farming land, Oak, Sugar, Beech, Poplar	6, 7	Land hilly, rich soil, good farming land, Oak, Sugar, Beech, Poplar
23, 26	Land hilly, Oak, Sugar, Oak, Beech, Poplar, Middleling farming land	28, 29	Land hilly, rich soil, good farming land, Oak, Sugar, Beech, Poplar	7, 18	Land hilly, rich soil, good farming land, Oak, Sugar, Beech, Poplar
22, 23	Same, good farming land	21, 28	Land hilly, rich soil, good farming land, Oak, Sugar, Beech, Poplar	18, 19	Land hilly, rich soil, good farming land, Oak, Sugar, Beech, Poplar
10, 23	Timber, Same, Land tolerable, good farming	30, 21	Land hilly, rich soil, good farming land, Oak, Sugar, Beech, Poplar	17, 30	Land hilly, rich soil, good farming land, Oak, Sugar, Beech, Poplar
10, 15	Land hilly, Oak, Hickory, Oak, Sugar, Beech, Poplar, Middleling farming land	16, 21	Land hilly, rich soil, good farming land, Oak, Sugar, Beech, Poplar	30, 31	Land hilly, rich soil, good farming land, Oak, Sugar, Beech, Poplar
11, 12	Land hilly, Oak, Hickory, Oak, Sugar, Beech, Poplar, Middleling farming land	16, 17	Land hilly, rich soil, good farming land, Oak, Sugar, Beech, Poplar		
10, 11	Land hilly, Oak, Hickory, Oak, Sugar, Beech, Poplar, Middleling farming land	9, 16	Land hilly, rich soil, good farming land, Oak, Sugar, Beech, Poplar		
2, 11	Land hilly, Oak, Hickory, Oak, Sugar, Beech, Poplar, Middleling farming land	8, 9	Land hilly, rich soil, good farming land, Oak, Sugar, Beech, Poplar		